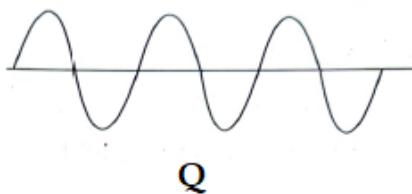
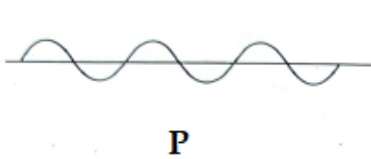


I. Choose the correct answer and write the correct answer along with the alphabet. [16 x 1 = 16]

- Burning of hydrogen is an example of
 - slow combustion
 - rapid combustion
 - explosion
 - spontaneous combustion
- Gaseous substance which extinguishes the fire among the following is
 - CO₂
 - O₂
 - H₂
 - N₂
- Friction, that exists between two surfaces in contact, when there is no relative motion between them, is called
 - sliding friction
 - static friction
 - viscous drag
 - rolling friction
- Force of friction is least in
 - marble tiles
 - wooden floor
 - playground
 - sandy sea shore
- Source book which keeps a record of all the endangered animals and plants.
 - Record book
 - Red data book
 - Orange data book
 - World record book
- Adolescents should be careful about what they eat, because
 - proper diet develops their brains.
 - proper diet is needed for the rapid growth taking place in their body.
 - adolescents feel hungry all the time.
 - taste buds are well developed in teenagers.
- The production of testosterone and estrogen are under the control of
 - thyroid gland
 - pancreas gland
 - pituitary gland
 - Adrenal gland
- Petroleum product used to road surfacing among the following is
 - Bitumen
 - Petrol
 - Diesel
 - Keresene
- Sound can not travel through
 - gases
 - solids
 - liquids
 - vacuum
- Wave with louder sound and correct reason among the following waves



- P - has smaller amplitude
- Q - has larger amplitude
- Q - has higher frequency
- P - has least frequency

11. Correct set liquids that conduct electricity among the following are
A. Distilled water, hydrochloric acid, sodium hydroxide
B. Milk, sulphuric acid, rain water
C. Petrol, distilled water, salt solution
D. Kerosene, glucose solution, tap water
12. Chromium plating is done on car parts, bath taps, kitchen gas burners, bicycle handlebars instead of making them from chromium because
A. Chromium resists scratches. B. Chromium is expensive
C. Chromium has a shiny appearance D. Chromium is less expensive
13. Which of the following cannot be charged easily by friction?
A. A plastic scale B. A copper rod
C. An inflated balloon D. A woollen cloth
14. When a metallic rod taller than a building is installed in the walls of the building, it
A. Provides strength to the building
B. Protects the building from rain
C. Transfers higher magnitude electric charges to the ground
D. Helps to extend the floors of the building
15. The phenomenon of the splitting of white light into seven colours is called as
A. dispersion B. refraction
C. reflection D. deviation
16. What is the angle of incidence of a ray if the reflected ray is at an angle of 90° to the incident ray?
A. 45° B. 90° C. 60° D. 180°

II. Answer the following questions in a sentence each

[4 x 1 = 4]

17. What is electroplating?
18. Draw the diagram showing the structure of paramecium.
19. What steps should be taken to protect yourself in case of an earthquake, if you are at home ?
20. What is the least distance of distinct vision 'for a young adult with normal vision?

III. Answer the following questions.

[6 x 2 = 12]

21. How lubricants reduce friction? Explain with an example.

OR

Explain why sportsmen use shoes with spikes.

22. Draw a diagram showing regular reflection of light on a plane surface. Identify reflected rays.
23. What are sex hormones? Why are they named so? State their function.

OR

Explain the sex determination in the unborn baby.

24. A pendulum oscillates 60 times in 3 seconds. Find its time period and frequency.

OR

Device 'A' vibrates 300 times in 6 seconds and device 'B' vibrates 300 times in 20 seconds. Which is audible sound and which is inaudible sound? Prove your answer by calculation.

25. "Even protected forests are not safe for the wild animals." - Justify this statement scientifically.

26. "Use of CNG in automobile vehicles is encouraged." - Give any two reasons.

IV. Answer the following questions

[3 x 3 = 9]

27. What are antibiotics? What precautions must be taken while taking antibiotics?

OR

Give reasons for the following:

i) it is advisable to always keep food covered.

ii) Pasteurised milk can be consumed without boiling.

iii) Jams, jellies and squashes are preserved by sugar

28. Draw the diagram showing different zones of candle flame and label following parts.

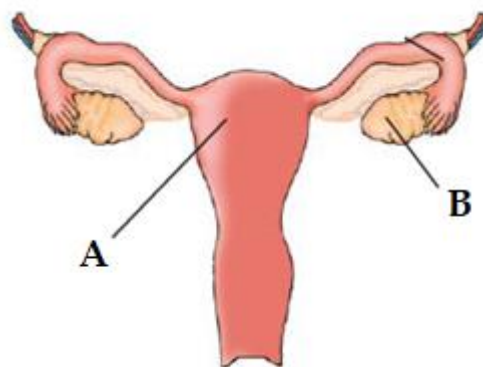
(i) hottest part (ii) least hot part

29. Observe the diagram showing the structure of female reproductive organs and answer the following questions

i. Name the structure 'A' and 'B'

ii. Write the function of 'B'

iii. Name the type of fertilisation that takes place in humans.



V. Answer the following question

[4 x 1 = 4]

30. Classify the following in to contact force and non - contact forces
gravitational force, force of friction, electrostatic force, muscular force.

Give reason for your answer.

OR

What is force? List the effects of force on object.

VI. Answer the following question

[5 x 1 = 5]

31.a) Write any three differences between manures and fertilisers.

b) What are the advantages of using manures.