






8th class worksheet 9

Activity 3: Read the warnings given on each of the pictures below. Match them with the meaning of the warning.

Warning	Meaning
	Do not use it in a closed room.
	Do not burn it.
	Keep it in a place where a child cannot go near it.
	Do not eat or drink it.
	Do not store it in a cupboard. Keep it in the fridge.

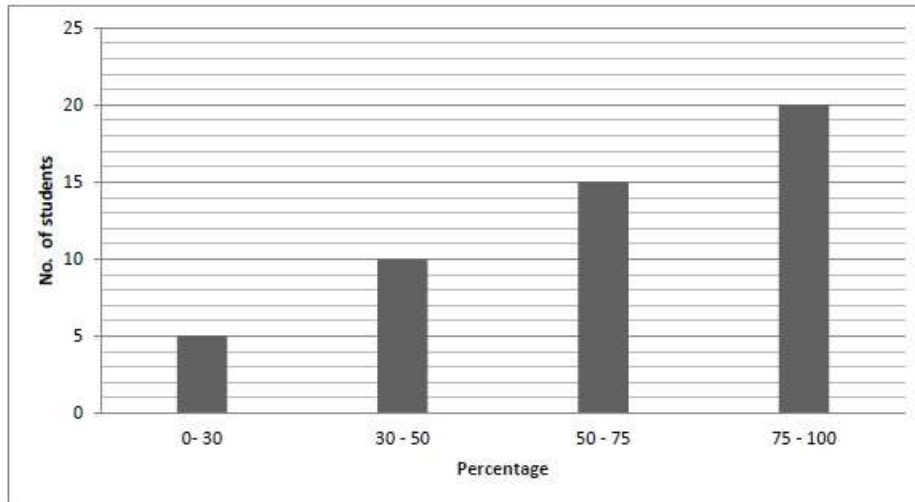
Answer:

1. WARNING: Do not incinerate. **Answer:** Do not burn it.
2. WARNING: For external use only. **Answer:** Do not eat or drink it.
3. WARNING: Use with adequate ventilation. **Answer:** Do not use it in a closed room.
4. WARNING: Keep refrigerated. **Answer:** Do not store it in a cupboard. Keep it in the fridge.
5. WARNING: Keep out of reach of children. **Answer:** Keep it in a place where a child cannot go near it.

LEARNING SHEET 8

Activity 4:

Study the following graph and answer the questions that follow.



- How many students wrote the test?

Answer: 50

- How many students fall under the 75-100 range?

Answer: 20

- How many students got the lowest mark range (0-30)?

Answer: 05 ASSESSMENT SHEET

Activity 5. a: (Assessment activity)

1) The meanings of a few signs or logos are given in the boxes. Match them with the pictures by writing the correct number in the circle adjacent to the box.

No blowing of horn	<input type="radio"/>	1		2		3	
Sarva Shiksha Abhiyan	<input type="radio"/>	4		5		6	
Danger! Attention!	<input type="radio"/>	7		8		9	
Hump ahead	<input type="radio"/>						
Speed limit	<input type="radio"/>						
Silence please!	<input type="radio"/>						
No parking	<input type="radio"/>						
Use the dustbin	<input type="radio"/>						
Railway crossing	<input type="radio"/>	10					
Mid-day Meal	<input type="radio"/>						

Answer: 1-9, 2-10, 3-2, 4-5, 5-7, 6-9, 7-1, 8-3, 9-4, 10-8

Activity 5. b:

Write a few labels found in your surroundings in the boxes given below.

Answer:

- A) Without permission no admission.
- B) No smoking.
- C) Danger: Construction work in process.
- D) Safety helmets must be worn.